

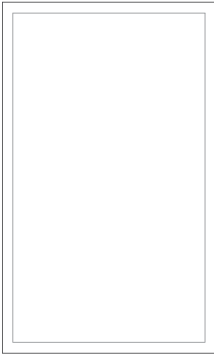


STUDIO 81

SOFT & SERENE  
CURATED SELECTION PACKAGE



## CABINETRY



### KITCHEN, ENSUITE, BATHROOM & DESK CABINETRY

*\*Desk as per plan*

MDF (single sided) - Glacier White  
3/4" Shaker **(Level 3)**

### CABINET HARDWARE

Drawers: 9635-128-DBK

Doors: 9635-96-DBK

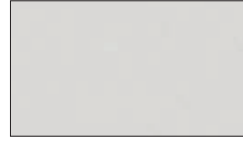


## COUNTERTOPS



### KITCHEN, ENSUITE & BATHROOM COUNTERTOPS

Engineered Stone - Bright White  
**(Level 1)**



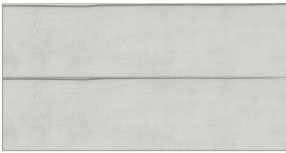
### DESK COUNTERTOP

*\*as per plan*

Laminate - Formica 9243-58  
Zen Grey - Matte Finish



## TILE



### KITCHEN BACKSPLASH

Olympia - Bricco Series  
Grigio 3"x12"  
Pattern: Rectangular Straight  
Horizontal **(Level 5)**  
Grout: #77 Frost

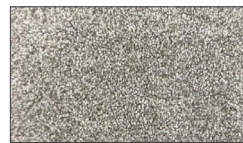


## FLOOR & CARPET



### LVP FLOORING

Divine Flooring - Voyage II  
Cool Hand Luke - Oak  
**(Level 3)**



### CARPET

Shaw Constellation - Fog  
**(Level 1)**

### UPPER BATHROOM WALL TILE

Simplicity Series - Cool Grey  
Matte 3"x6"  
Pattern: Rectangular Straight  
Horizontal **(Level 1)**  
Grout: #77 Frost



## PLUMBING

### KITCHEN SINK

Stainless Steel Double Bowl



### ENSUITE SHOWER BASE TILE

*\*Shower base tile as per plan*  
Daltile - Keystone Square Mosaic  
Desert Grey 2"x2" **(Level 1)**  
Grout: #77 Frost



### KITCHEN & BATHROOM PLUMBING

Peerless - Xander Series - Chrome



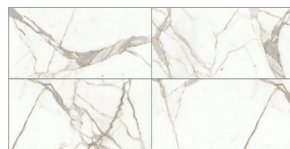
### FLOOR TILE

ENSUITE, UPPER BATHROOM & LAUNDRY  
WALL TILE

ENSUITE SHOWER & FIREPLACE

*\*Fireplace as per plan and detail selected*

Ceratec - Glamour Series  
Calacatta Matte 12"x24"  
Pattern: Rectangular Straight Horizontal **(Level 2)**  
Grout: #77 Frost

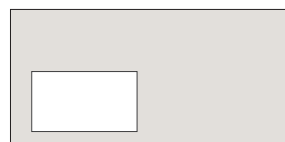


### ENSUITE & UPPER BATHROOM SINKS

Granite Gallery  
Rec - GV8382



## PAINT



### WALL COLOUR

Dove's Wing

### TRIM COLOUR

Glacier White



# FINISHING



**RAILING** *\*as per plan*  
 POST: D-Rail Miter 2 5/8"  
 CAP: None  
 HANDRAIL: D  
 SPINDLES: Blank Metal (Black)  
 BRACKET: Standard Curved Metal (Black)



**DOOR PROFILE**  
 Kingston (**Level 1**)



**DEADBOLT**  
 Metropolitan Square (Satin Chrome)



**DOOR HANDLE**  
 Daylon Lever Square (Satin Chrome)



**BATHROOM HARDWARE**  
 Infinity Series (Polished Chrome)



*"The package offers a versatile grey color palette for you to personalize to your liking in your home. It combines modern elements with classy features to create a stylish and serene ambiance that you can enhance with your unique touch."*

*- Jessica Hart, Design Consultant*

## ACKNOWLEDGEMENTS

### INITIALS

By choosing a curated selection package, all structural and plan revisions must be documented at Firm Sale. Any revision requests at the Plan Presentation Meeting will be subject to approval from Cedarglen Homes and may result in a late change fee.

Additional square footage and lineal footage charges must include upgraded levels and are subject to approval from Cedarglen Homes at the time of Firm Sale.

All selections are considered complete and no changes will be permitted, including standard wire shelving.

No credits will be provided for allowances noted in Schedule B Enhanced Specifications. No cash value.

**PURCHASER NAME:** \_\_\_\_\_

**PURCHASER ADDRESS:** \_\_\_\_\_

**DATE SIGNED:** \_\_\_\_\_

**PURCHASER SIGNATURE:** \_\_\_\_\_

**CEDARGLEN REPRESENTATIVE:** \_\_\_\_\_

*Cedarglen Homes ("Cedarglen") reserves and retains the rights, title and interest, in whole or in part, of this document including but not limited to reproduction. Cedarglen reserves the right, at any time, to make changes without notice or obligation. Details may not be exactly as shown, with Errors & Omissions Expected (E&OE). All photos included in this document are a visual representation only and the exact colouring and detail may vary in person. The selections highlighted here go hand-in-hand with the Cedarglen Homes' Essential Specifications and each community's Schedule B Enhanced Specifications. In the event of a dispute between this document and a contract, the contract will prevail. Revised and effective 10/08/2024.*

**INITIALS**

**OPTIONAL - SELECTION PACKAGE BLACK PLUMBING AND FIXTURE (pr190)**

Upgrade selection package from chrome to black plumbing and finishing. This includes:

**KITCHEN SINK**

Blanco - Horizon U2 - Anthracite

**KITCHEN FAUCET**

Peerless - Xander Series - Matte Black

**BATHROOM PLUMBING**

Peerless - Xander Series - Matte Black

**BATHROOM HARDWARE**

Taymor - Allusion Series - Matte Black

**SHOWER GLASS TRIM**

Black

**DEADBOLT**

Metropolitan Square - Matte Black

**DOOR HANDLE**

Weiser - Daylon Lever Square - Matte Black

**ANCILLARIES**

Black



*\*Note: Sinks in the working kitchen and secondary suite kitchen will be standard stainless steel unless charged at Firm Sale.*

**OPTIONAL - SELECTION PACKAGE CABINET (pr188)**

Revise cabinet layout to accommodate a built-in microwave/wall oven and cooktop.

*\*Note - This option is not compatible with all models. Please confirm with Area Sales Manager.*

**OPTIONAL - SELECTION PACKAGE ISLAND CABINET (pr189)**

Revise island cabinetry to maple (shown below). This can only be used on a standard plan with a kitchen island.



**KITCHEN ISLAND CABINETS**

Maple Slab - Smoke (**Level 3**)

*The purchaser acknowledges that there is an additional cost for each option on this page. An accepted and signed change request is required in order for the changes to be implemented.*

**PURCHASER NAME:** \_\_\_\_\_

**PURCHASER SIGNATURE:** \_\_\_\_\_

**DATE SIGNED:** \_\_\_\_\_

**CEDARGLEN REPRESENTATIVE:** \_\_\_\_\_

